



**Minutes of the Joint Session of the
Molalla City Council and Planning Commission
Molalla Civic Center
315 Kennel Ave., Molalla, OR 97038
November 15, 2023**

CALL TO ORDER

The Meeting was called to order by Mayor Scott Keyser at 6:30pm.

COUNCIL ATTENDANCE

Present: Mayor Scott Keyser, Council President Jody Newland, Councilor Leota Childress, Councilor Terry Shankle, Councilor Crystal Robles, Councilor Eric Vermillion, and Councilor RaeLynn Botsford.

PLANNING COMMISSION ATTENDANCE

Planning Chair Doug Eaglebear, Planning Commissioner Connie Sharp, Planning Commissioner Clint Ancell, Planning Commissioner Martin Ornelas, and Planning Commissioner David Potts.

Absent: Planning Commissioner Jennifer Satter

STAFF IN ATTENDANCE

Dan Huff, City Manager; Christie Teets, City Recorder; Mac Corthell, Assistant City Manager, and Kyle Murphy, Code Compliance Specialist.

Guest Speakers: Alli Langley and Colin McArthur – Cameron McCarthy.

Mike (Ralph) Rodia – OSU Beekeeping Association.

GENERAL BUSINESS

A. Planning Commission Appointment and Process

Currently, there is an opening on Planning Commission. Staff is seeking recommendations from Council on a procedure for Council appointment of a Planning Commissioner. In the past, Council has conducted interviews and selected a member. Mayor Keyser would like applications to go through Planning Commission for review and to bring a recommendation or two for Council to consider. Councilor Childress felt Planning Commissioners were qualified to bring a final candidate to Council for appointment. Planning Chair Eaglebear agreed that it was an appropriate task for Planning Commission to conduct. It was agreed by consensus between the groups that selection would take place at Planning Commission, with the final appointment by City Council.

B. Parks Master Plan Update – Cameron McCarthy Landscape Architecture & Planning

Alli Langley and Colin McArthur of Cameron McCarthy gave a presentation to the group that reflected an update on the Parks Master Plan. The draft is attached to these meeting minutes.

[For the complete video account of the Parks Master Plan Update, please go to minutes 7:38-53:55
“Molalla City Council Meetings – November 15, 2023”](#)

C. Residential Beekeeping & Considerations for the Adoption of Code (Mike Rodia, PhD)

Code Compliance Specialist, Kyle Murphy, introduced Mike Rodia, of OSU Beekeeper Association. A recent complaint regarding residential beekeeping was filed, however the City does not have this addressed in the Code. Mike made a presentation to Council and Commission that reflected sample ordinances and education about beekeeping.

[For the complete video account of the City Council Meeting, please go to YouTube
“Molalla City Council Meetings – November 15, 2023”](#)

ADJOURN

Mayor Keyser adjourned the meeting at 8:08pm.



Scott Keyser, Mayor

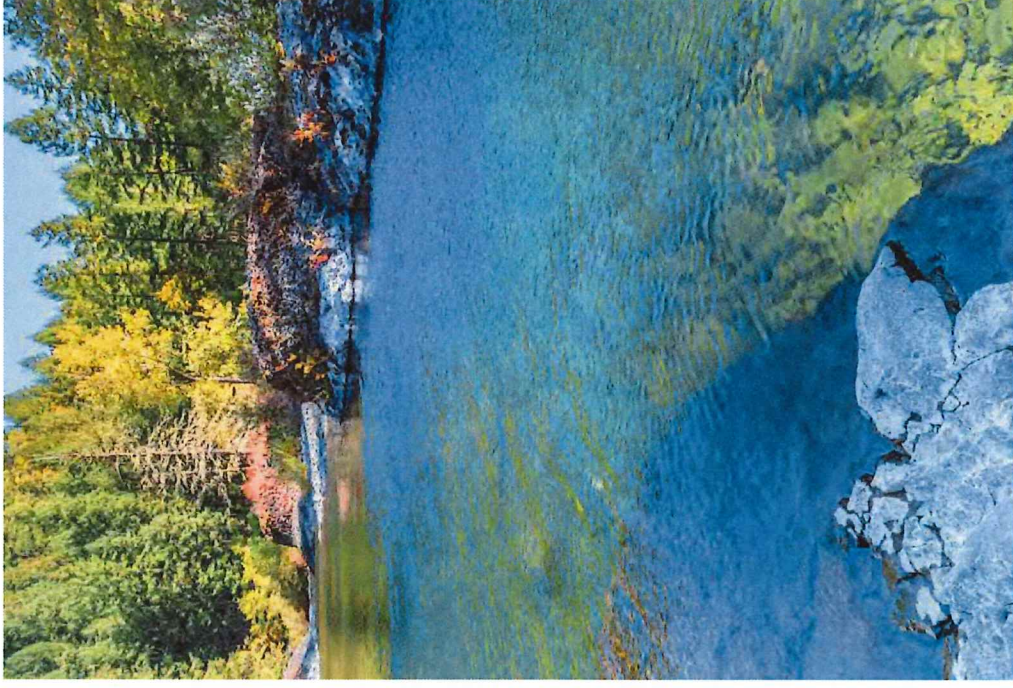
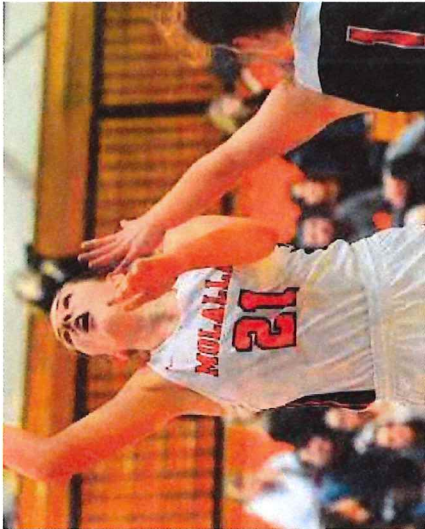
12/13/23

Date

ATTEST:



Christie Teets, City Recorder



City of Molalla

Parks, Recreation, and Trails System Plan

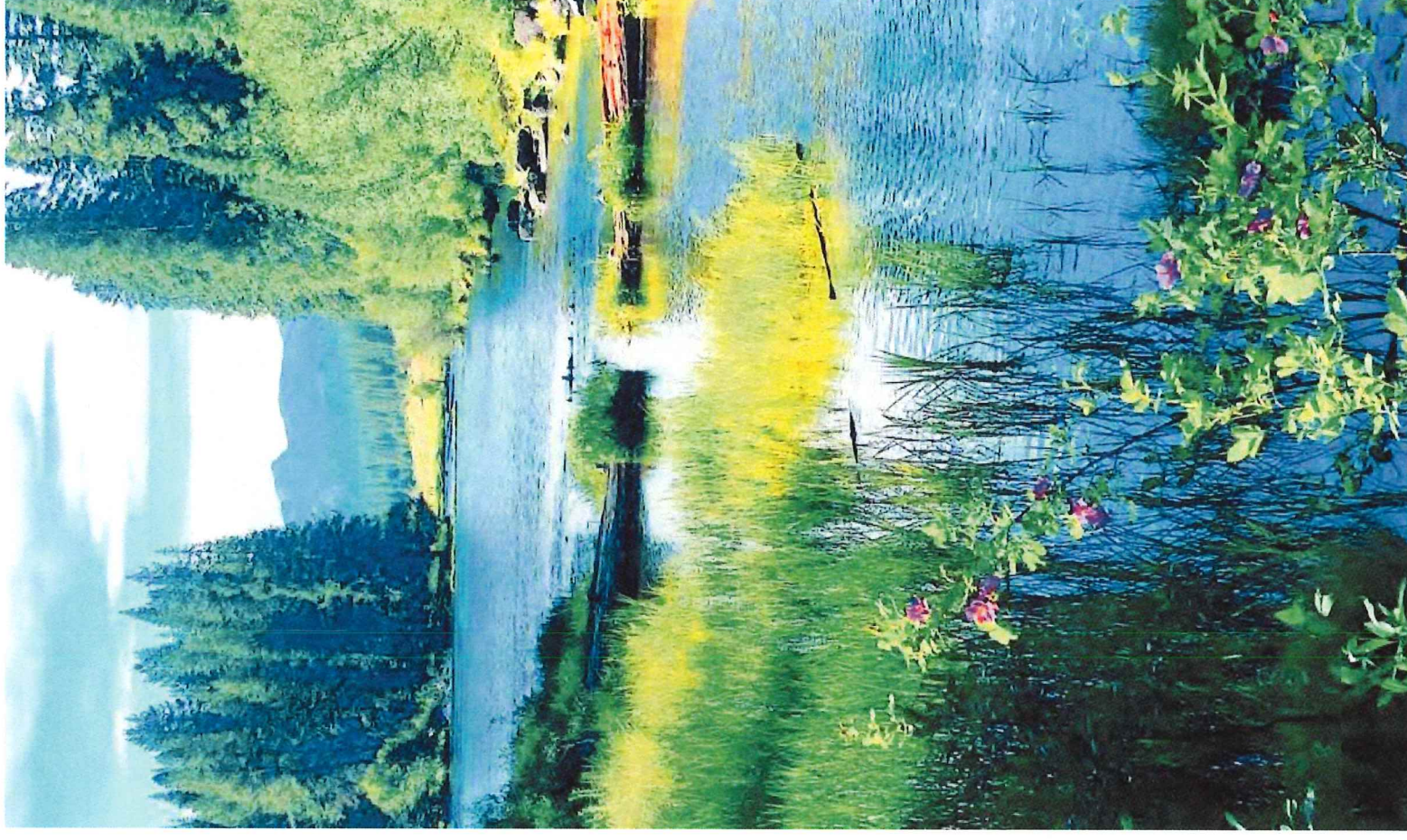
Joint City Council and Planning Commission
Work Session
Nov. 15, 2023



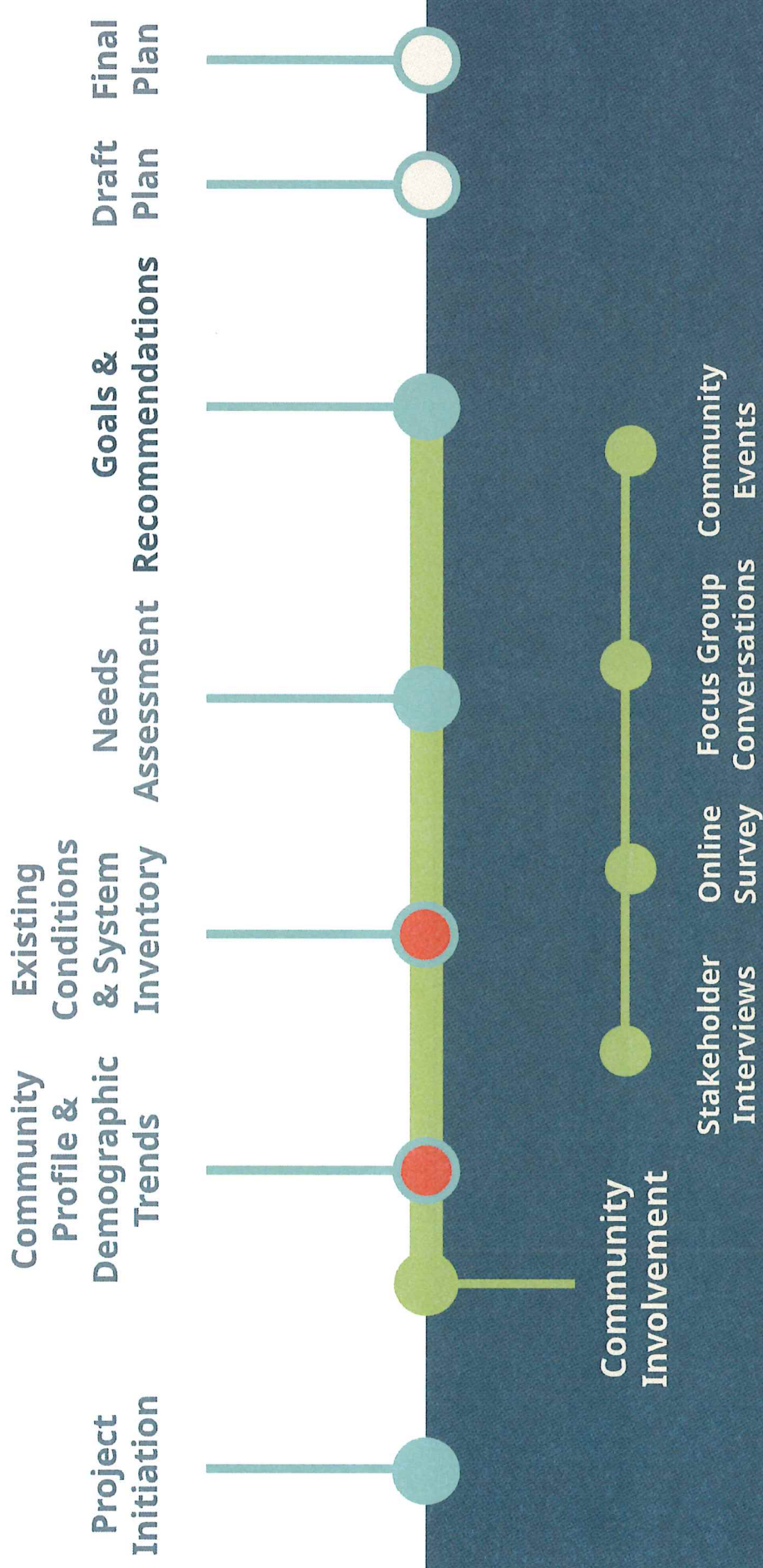
CAMERON
McCARTHY
LANDSCAPE ARCHITECTURE & PLANNING

A Parks & Recreation System Plan:

- Provides community vision for the parks system
- Helps leverage funding
- Prioritizes parks and projects in budget process
- Facilitates relationship building
- Guides efforts to meet needs of current and future residents



Planning Process



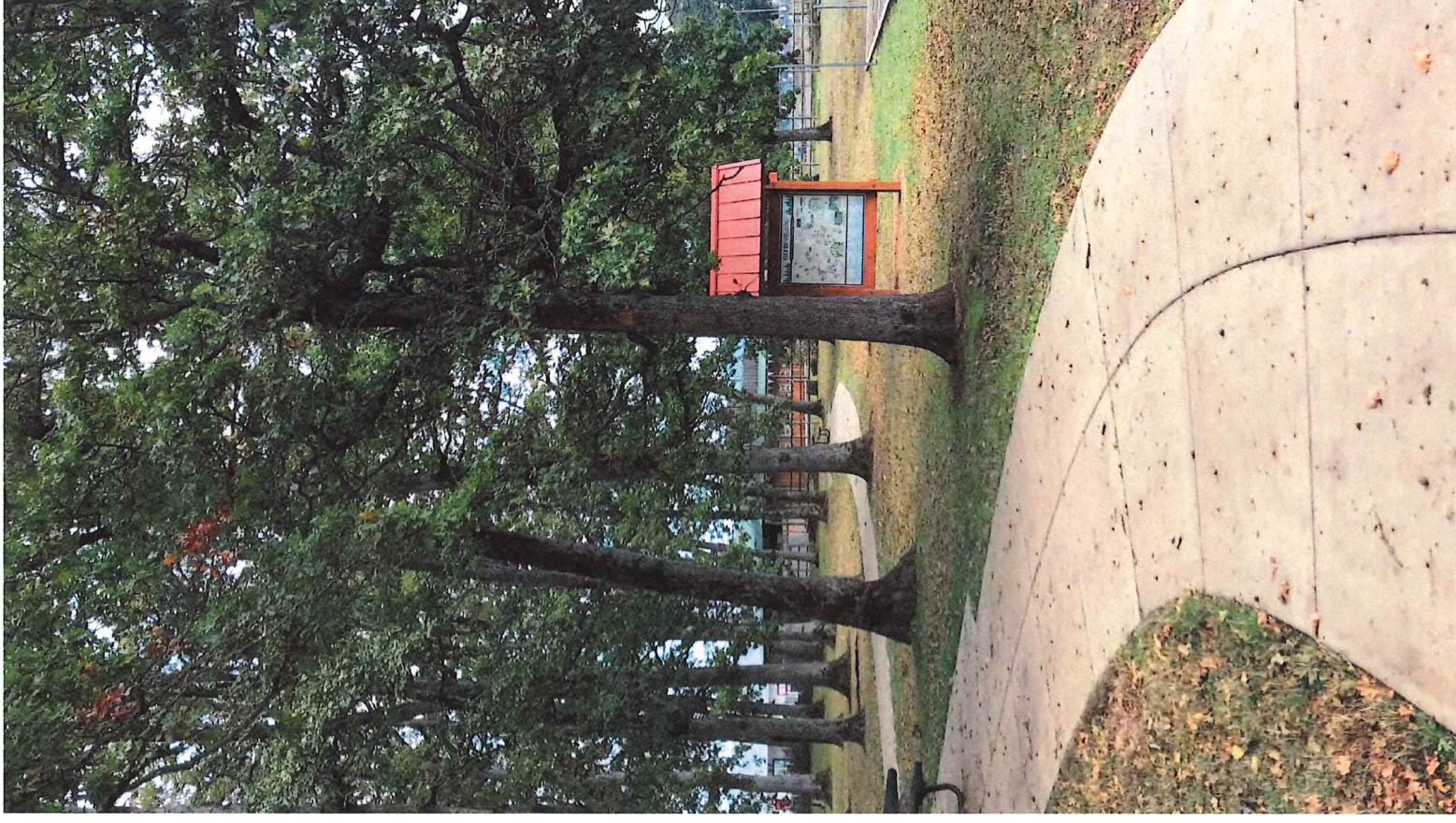
Community Profile & Demographic Trends

Molalla Population by Age



Recent City & Community Achievements

- New playground equipment: Strawberry Park and Fox Park
- Pickleball courts at Long Park
- Disc golf at Ivor Davies Park
- ADA paths at Clark Park



Facility Inventory

City Owned

EXISTING CITY PARKLAND	ACRES
Mini Parks	
Odd Fellows Park	0.14
Rotary Park	0.44
Neighborhood Parks	
Long Park	0.25
Strawberry Park	1.09
Community Parks	
Clark Park	1.96
Fox Park	13.00
Special Use Parks	
Bohlander Field	14.01
Molalla Skate Park	0.34
Sheets Field & Molalla BMX Track	3.39
Open Space	
Ivor Davies Nature Park	42.46
TOTAL	77.09

POTENTIAL CITY PARKLAND	ACRES
Bear Creek Annex	0.91
Chief Yelkus Park	6.85
Pioneer Cemetery Park	2.37
TOTAL	10.13

TRAILS	MILES
Ivor Davies Path	0.71
Toliver Path	0.15
TOTAL	0.86



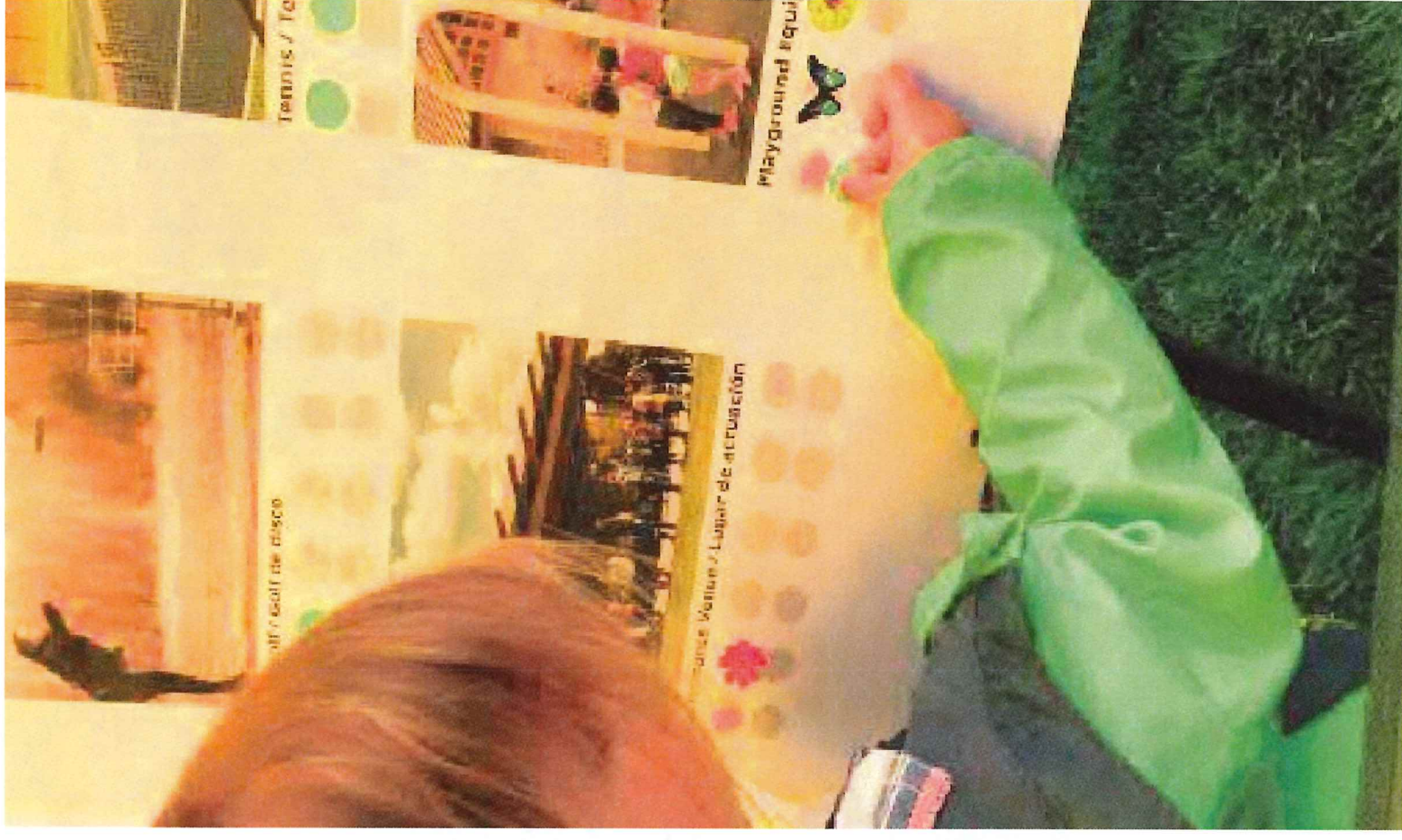
Community Involvement

Essential Perspectives

- Youth
- Seniors/elders
- Latino residents
- People with disabilities
- Low-income households
- Community development, conservation, and public health advocates
- Existing park users and event organizers
- Businesses and nonprofits

Methods & Activities

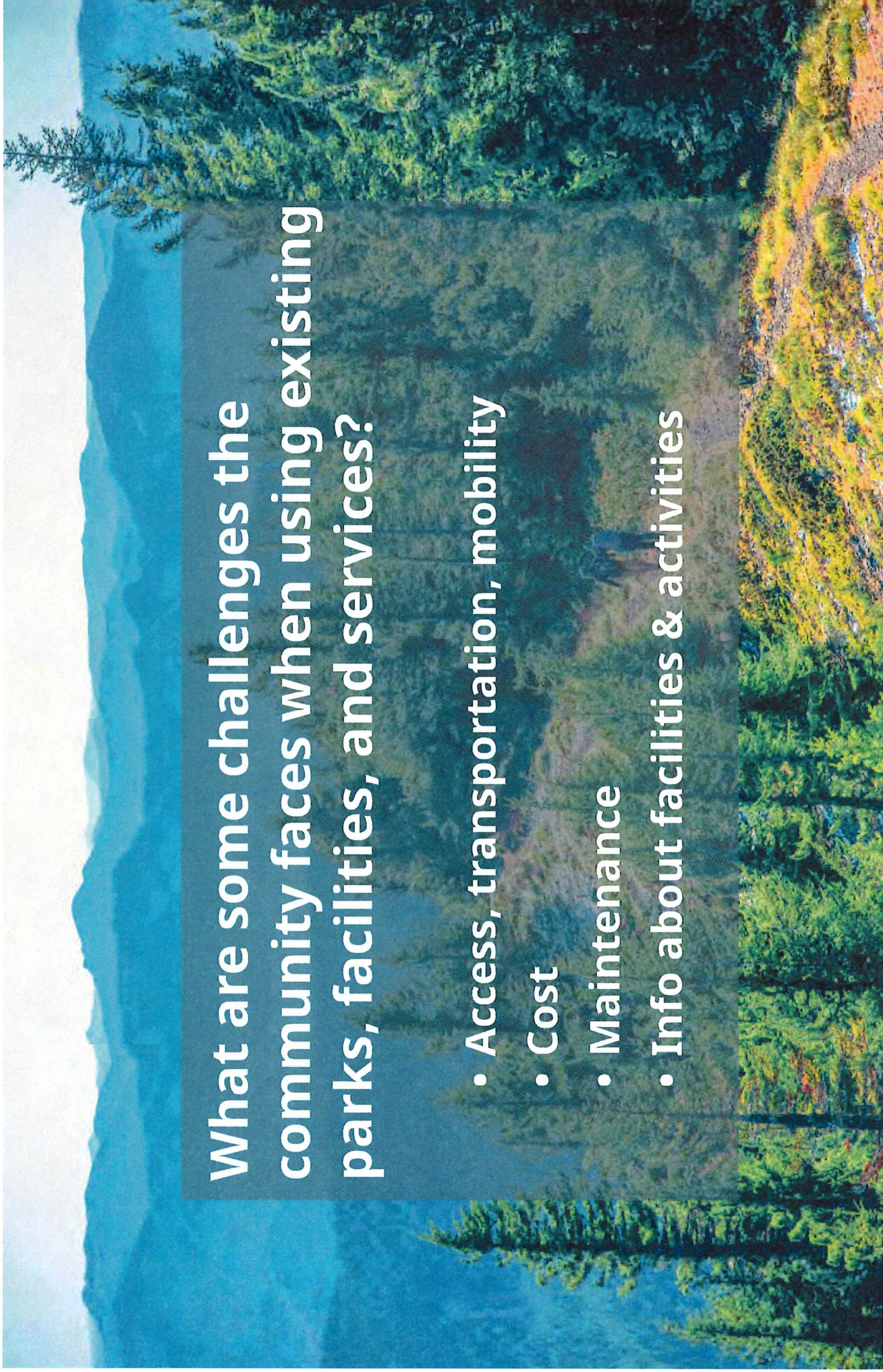
- Project advisory committee
- Stakeholder interviews
- Online survey
- Community events
- Project webpage, flyers, social media, newsletters
- Spanish and English



Discussion: Concerns & Opportunities

What are some challenges the community faces when using existing parks, facilities, and services?

- Access, transportation, mobility
- Cost
- Maintenance
- Info about facilities & activities



Discussion: Concerns & Opportunities

How could park and recreation improvements contribute to or align with other community goals?

- Public health
- Economic development
- Environmental conservation
- Social equity

