

# OR213 – Toliver Road Updates

City of Molalla  
Council Meeting

Wednesday, September 11, 2019

Tova Peltz / Region 1 Project Delivery Manager  
Paul Scarlett / Region 1 Area Manager – East



# Toliver intersection work to date

2018–2021 Statewide Transportation Improvement Program (STIP) – Preliminary Engineering (PE) funds programmed to evaluate operations of the intersection of OR213 + Toliver Road.

Fall 2018 – Road Safety Audit (RSA) by ODOT / Molalla / County / Consultant Team to study safety performance of the intersection of OR213 + Toliver Road.

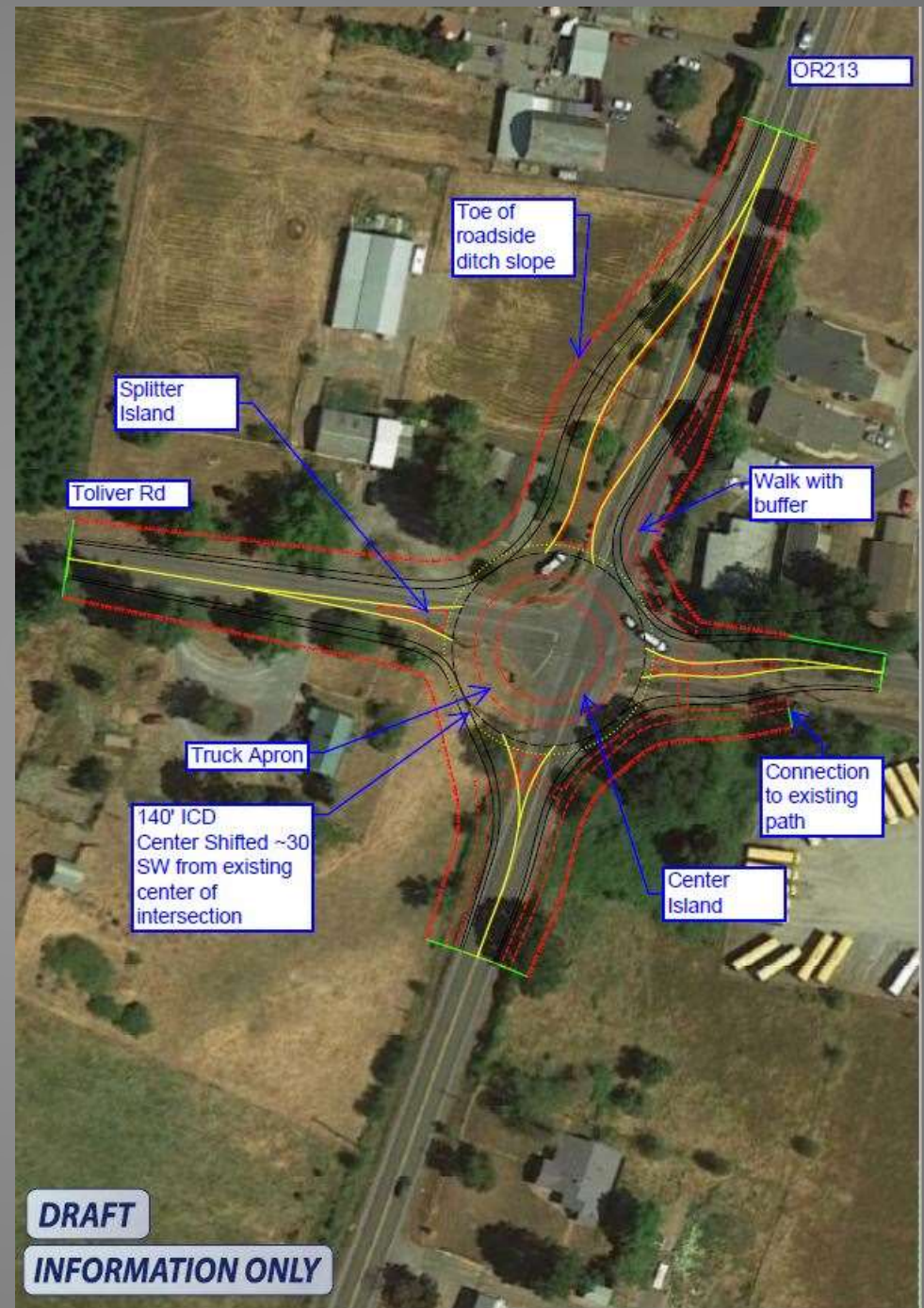
2019 – Scoping for 2021–2024 STIP identified included an All Roads Transportation Safety (ARTS) project and a Leverage project to deliver design + construction of the intersection improvements

May 2019 – Intersection Control Evaluation (ICE) considered no-build condition and two RSA options



## Preliminary design assumptions:

- 140 ft radius to outside fog line
- 35 mph design speed
- Shoulders up to 6 ft wide
- Minimize impacts to NE corner Right of Way and SE corner wetlands
- Connect the existing multi-use path on Toliver to new sidewalk on OR213



## Funding summary

Current cost estimate = \$8,894,391

This includes design, right-of-way, utility relocations, and construction, as well as inflation to construction year (2023) dollars

City contribution – \$2,247,990

State contribution – \$6,646,000 which includes current STIP allocation and future 2021–2024 STIP



## Next steps for Toliver

|             |  |
|-------------|--|
| Oct 2019    | Inter-Governmental Agreement (IGA) between Molalla and ODOT to deliver the project |
| Fall 2019   | Begin survey work  |
| Jan 2020    | Oregon Transportation Commission (OTC) approves 2021–24 STIP                       |
| Spring 2020 | Advance and obligate PE phase funds  |



## Ongoing nearby improvements

Feb 2019 – Rapid Flashing Beacon installed by ODOT at OR211 + N. Hezzie Lane

Sept 2019 – Speed reduction approved on OR213 from 40–45 mph down to 35 mph

April 2020 – Multi-use path project bid opening for OR213 – S. Ona Way

Late 2020 – ODOT ADA Pilot will replace ADA ramps on OR211 in downtown Molalla

