



OR 211: Pedestrian and Bike Improvements

ODOT, in partnership with the City of Molalla, is making pedestrian and bicycle improvements in Molalla along the north side of Oregon 211 between Oregon 213 and North Hezzie Lane. This project will enhance safety, operations, and efficiency for people walking, biking, driving, rolling, and using transit in the area.

Construction is complete!

Watch a video highlighting the improvements

We invite you to celebrate the completion of this project by [watching a video](#) highlighting the improvements. We debuted the video at the Molalla City Council meeting Dec. 8 to mark the completion of this partnership project.



Thank you for your patience as we made these improvements!

[OR 211 Bike and Pedestrian Improvements Project - YouTube](#)

Overview of project improvements

During the summer of 2021 we constructed a new section of sidewalk with accessible curb ramps near the Molalla Market Center (shown at right).

We built a separated 10-foot shared use path with a 5-foot buffer space from the highway between Industrial Way and South Ona Way.

Crews installed a new bridge along OR 211 over Bear Creek (before and after images shown at right).

The new bridge will provide safe access for people walking and biking where previously users shared the narrow highway bridge.

New Americans with Disabilities Act (ADA) compliant curbs ramps, along with additional lighting, have also been installed at the existing pedestrian crossing on OR 211, on the east side of North Hezzie Lane.

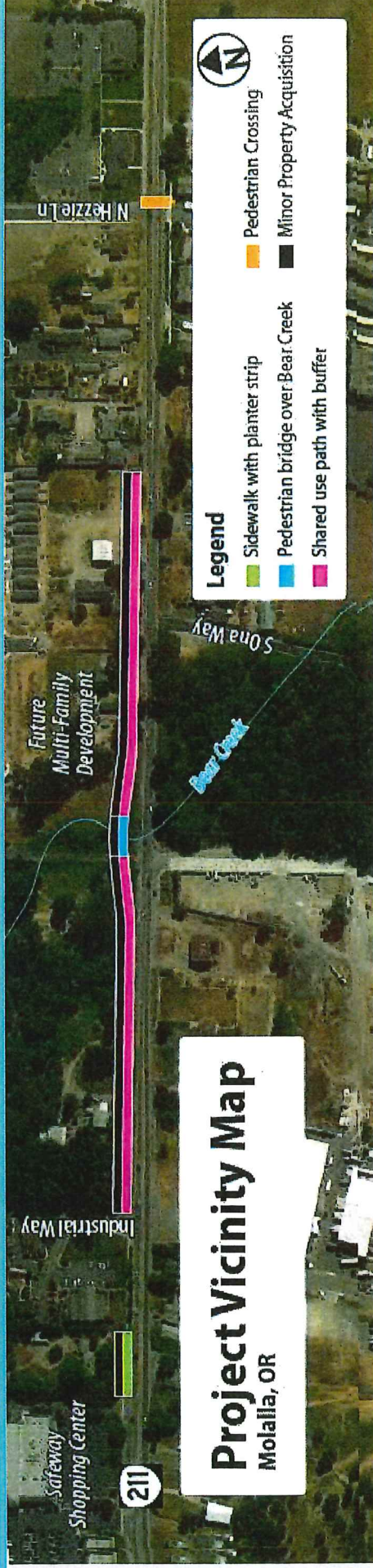


BEFORE



TODAY

OR 211: Pedestrian and Bike Improvements



Project purpose

Improve safety, operations and efficiency by installing pedestrian facilities near OR 213 in downtown Molalla and installing lighting on OR 211 at North Hezzie Lane.

Schedule

- Fall 2020 through Fall 2021

Traffic Impacts

- Lane closures with nighttime short-term traffic.
- Pedestrian detours.

Oregon 213: Roundabout at Toliver Road

ODOT, in partnership with the City of Molalla, is designing a project to improve safety at the intersection of OR 213 and Toliver Road in Molalla by constructing a roundabout.

About the project

Currently, the intersection of OR 213 and Toliver Road is controlled by stop signs and has a high rate of crashes. A roundabout will improve safety by reducing sharp turns while also accommodating the type of traffic that uses it, including large vehicles like trucks, buses and agricultural equipment.

In 2018, ODOT conducted a Road Safety Audit which studied the safety concerns and travel through the intersection and identified potential solutions. Through this audit and work with local agencies and engineers, it was determined a roundabout will bring the greatest safety benefits.

What is a roundabout?

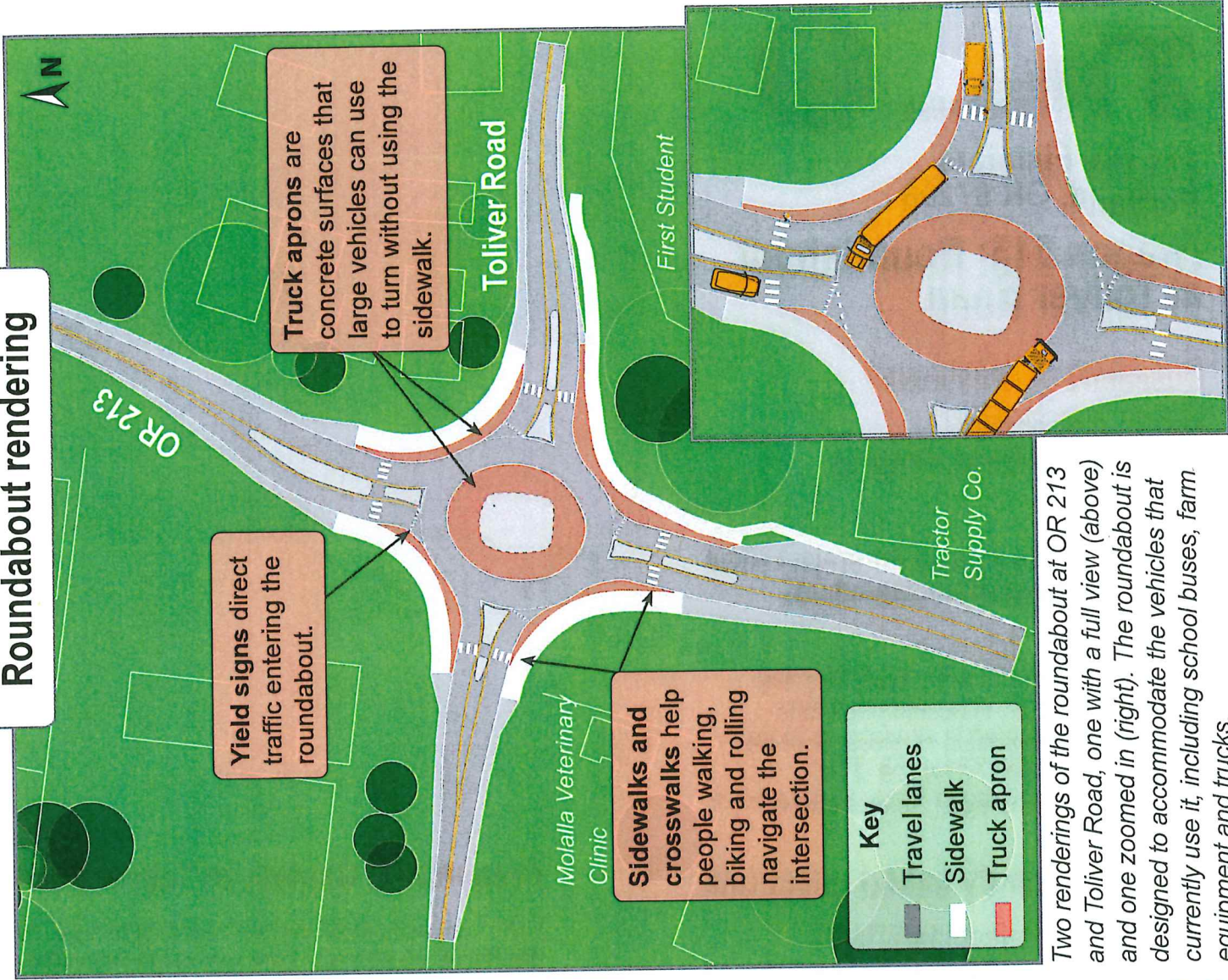
A roundabout is a type of circular intersection that uses yield signs to control traffic entering the intersection. Roundabouts are designed with curved entrances to reduce speeds and to reduce high-speed, head-on, right-angle and turning crashes, which improves safety.

Schedule

Design continues through 2022. Construction is planned to begin in 2023. Schedule is subject to change.

ToliverRoundabout.org

Roundabout rendering



Two renderings of the roundabout at OR 213 and Toliver Road, one with a full view (above) and one zoomed in (right). The roundabout is designed to accommodate the vehicles that currently use it, including school buses, farm equipment and trucks.



123 NW Flanders
Portland, OR 97209

Oregon 213: Roundabout at Toliver Road

Questions or comments?

Katelyn Jackson, ODOT

Katelyn.Jackson@odot.state.or.us

503-731-8503

Learn more and sign up for project email updates at ToliverRoundabout.org

For ADA (Americans with Disabilities Act) or Civil Rights Title VI accommodations, translation/interpretation services, or more information call 503-731-4128, TTY 800-735-2900 or Oregon Relay Service 7-1-1.

Frequently asked questions

Why is this project important?

The intersection of OR 213 and Toliver Road has a high crash rate, within the top 10 percent of all highway segments in the state. Between 2007 and the end of 2016, there were 38 crashes and 83 percent of crashes resulted in injury. Constructing a roundabout will improve safety for travelers while still allowing turning movements.

Why not install a traffic signal?

While a traffic signal may facilitate all the directions of traffic and turns, installing new traffic signals can result in an increase in rear-end crashes. In rural areas, new traffic signals are associated with a 77 percent reduction in angle crashes, but also a 58 percent increase in rear-end crashes, which can be severe and fatal in high-speed areas. Traffic signals do not address speeds at an intersection – roundabouts do reduce speeds. Often drivers accelerate through an intersection to try to make it through before the signal turns red, which is dangerous.

A roundabout was found to facilitate all directions of traffic and turning movements while bringing the greatest safety benefits, including reducing speeds into the community.

Oregon 213: Glorieta en Toliver Road

ODOT, en asociación con la Ciudad de Molalla, está diseñando un proyecto para mejorar la seguridad en la intersección de OR 213 y Toliver Road en Molalla, construyendo una glorieta.

Actualmente, la intersección de OR 213 y Toliver Road está controlada por señales de alto y tiene una alta tasa de colisiones. Una glorieta mejoraría la seguridad reduciendo las vueltas cerradas mientras que se adapta al tipo de tráfico que la usa, incluyendo vehículos grandes como camiones, autobuses y equipo agrícola.

En 2018, ODOT realizó una Auditoría de seguridad en carreteras que estudió los problemas de seguridad y el viaje a través de la intersección e identificó soluciones potenciales. Mediante esta auditoría y el trabajo con agencias e ingenieros locales, se determinó que una glorieta traerá los mayores beneficios de seguridad.

Está programado que la construcción se inicie en 2023. El programa está sujeto a cambio.

Aprenda más e inscribese para recibir actualizaciones del proyecto por correo electrónico en ToliverRoundabout.org

Upcoming traffic impacts on OR 213 for development in Molalla between Toliver Road and Main Street

The developer of the property off Oregon 213 in Molalla where Tractor Supply Co. is located, Hix-Snedeker, will be constructing improvements along the highway required as part of the development effort. The improvements include:

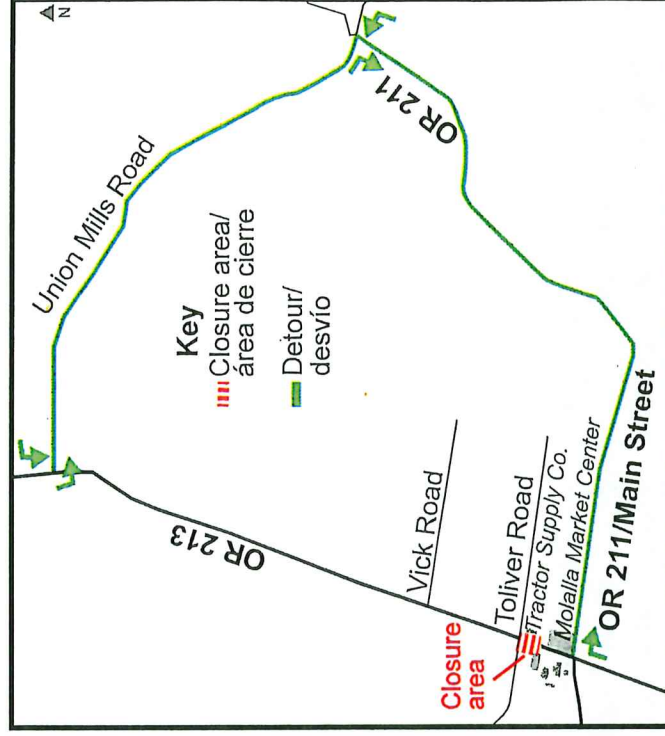
- Constructing a new left-turn lane for southbound traffic on OR 213 to increase safety for turning vehicles.
- A new sidewalk along the business on OR 213.

Traffic impacts

Travelers can expect daytime and nighttime lane closures with flaggers directing traffic.

For up to two weeks, OR 213 will be fully closed in both directions, around-the-clock, at Tractor Supply Co. Traffic can follow a signed detour using Oregon 211/Main Street and Union Mills Road.

Local traffic can continue to access residences and businesses on either side of the closure area. Watch for road signs and check TripCheck.com for closure dates.



Schedule

Work is scheduled to begin in August and continue into fall 2022.



ODOT District 2B Permits Office
9200 SE Lawnfield Road
Clackamas, OR 97015

Notice on behalf of Hix-Snedeker Development

Upcoming traffic impacts OR 213 in Molalla for development improvements

Questions? Contact Ask ODOT at 1-888-275-6368
AskODOT@odot.oregon.gov. Check TripCheck.com for
traffic impacts.

*For ADA (Americans with Disabilities Act) or Civil Rights Title
VI accommodations, translation/interpretation services, or
more information call 503-731-4128, TTY 800-735-2900 or
Oregon Relay Service 7-1-1.*

*¿Habla usted español? Podemos proveer la información en
esta publicación en español. Para recibir la información en
español, por favor llámé al (503) 731-4128.*

**Habrá cierres de carriles y cierres en todos los sentidos
en la carretera estatal OR 213 cerca de Tractor Supply
Co. Los cierres de carriles comienzan en agosto. Está
pendiente de las señales con las fechas de los cierres en
todos los sentidos. Utilice las rutas de desvío indicadas.
Los vehículos del área pueden acceder a residencias y
negocios por ambos lados del área de cierre.**

OR 211 Woodburn-Estacada Highway Safety Corridor

On October 27, 2021, the Oregon Department of Transportation will designate an eight-mile stretch of OR 211 between Molalla and Colton as the new OR 211 Safety Corridor.

About the Safety Corridor:

Safety corridors are stretches of state highways where fatal and serious injury traffic crash rates are higher than the statewide average for similar types of roadways. The OR 211 Safety Corridor is a short-term way to address the recent increase in crashes.

The fatal and serious crash rate in this corridor was 166.5 percent of the statewide average for similar roads from 2015 to 2019. During this time there were 139 crashes and twelve fatalities in the corridor, and the most common causes of fatal and serious injury crashes were driving left of center, inattention, driving too fast for current conditions, and driving faster than the speed limit. In light of this high crash rate, ODOT is designating the new safety corridor to help bring down the crash rate quickly using enforcement, engineering and education. We are getting ready to conduct a Road Safety Audit on OR 211 to evaluate the current conditions of safety on the road, and we are also putting together a group of community stakeholders including representatives from City and County agencies, schools and law enforcement to identify possible safety solutions for the corridor to reduce crashes and improve safety for everyone.

What will happen next on OR 211:

ENFORCEMENT - We will install signs in October showing the limits of the safety corridor and announcing that **traffic fines are now double**. Law enforcement will enforce the new double traffic fines so drivers should pay extra attention and obey all traffic laws.

ENGINEERING - Over the next three to five years, ODOT will also implement low-cost engineering solutions designed to bring down the crash rate in the corridor. At the end of a three to five year period, we will also have a better idea of some longer term safety solutions to plan for after we decommission the OR 211 Safety Corridor.

EDUCATION - We will also work to raise awareness in the local community and with people traveling through this corridor about safe driving habits.



**SAFETY CORRIDOR
NEXT 8 MILES**



**FINES
DOUBLE**



To keep up with OR 211 Safety Corridor news, see how we are working to reduce crash rates, or sign up for email updates, visit:

tinyurl.com/OR211SafetyCorridor

OR 211 Woodburn-Estacada Highway Safety Corridor

ODOT is designating a new safety corridor on eight miles of OR 211 between S Vaughan Road in Molalla and just east of S Schieffer Road in Colton.

Traffic fines will double beginning October 27. Over the next three to five years, ODOT will also educate the traveling public and local community about safe driving habits and improve safety with low-cost engineering solutions designed to reduce the crash rate.

To learn more about the new OR 211 Safety Corridor and sign up to get updates from us as we develop plans for safety improvements to reduce crashes, visit:

[tinyurl.com/
OR211SafetyCorridor](https://tinyurl.com/OR211SafetyCorridor)



Questions or comments? Contact:

Hope Estes, ODOT Community Affairs
503-731-4812
hope.estes@odot.state.or.us



123 NW Flanders
Portland, OR 97209

ODOT will designate eight miles of OR 211 as a new Safety Corridor as of October 27, 2021.

[Read more inside.](#)

For ADA (Americans with Disabilities Act) or Civil Rights Title VI accommodations, translation/interpretation services, or more information call 503-731-4128, TTY 800-735-2900 or Oregon Relay Service 7-1-1.

¿Habla usted español? Podemos proveer la información en esta publicación en español. Para recibir la información en español, por favor llámé al (503) 731-4128.