



T. 5 S. R. 2 W. E. W.M.

APPROVED WETLANDS INVENTORY
Oregon Department of State Lands

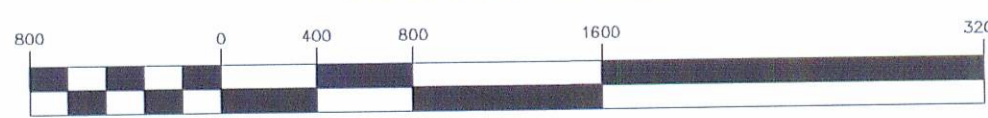
Meets LWZ standards
Date 3/04 Approved by J. Moran

LEGEND

Project Boundary	-----	Division of State Lands Determination	-----
Watershed Boundary	-----	Potentially Jurisdictional Wetland	-----
Creeks/drainages	-----	Access Denied	-----
		On-site permission	-----
		Wetland Code	BC-7



GRAPHIC SCALE



Scale in Feet

Funding for this project was provided by a grant from the Oregon Department of Land Conservation and Development

THIS MAP IS FOR PLANNING PURPOSES ONLY
WETLAND BOUNDARIES ARE APPROXIMATE
AND SUBJECT TO CHANGE

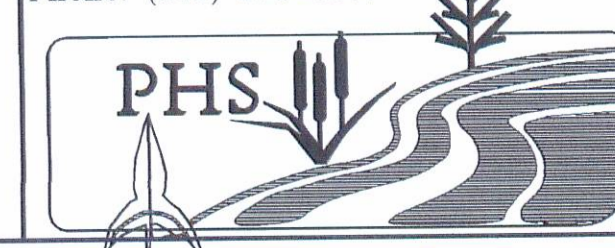
Information shown on this map is for planning purposes only and wetland information is subject to change. There may be unmapped wetlands subject to regulation and all wetland boundary mapping is approximate. In all cases, actual field conditions determine wetland boundaries. You are advised to contact the Division of State Lands and the U.S. Army Corps of Engineers with any regulatory questions.

DATE: June, 2001
BASE MAP INFO: Supplied by City of Molalla, Clackamas County ISGIS
JOB NO.: 2250

MOLALLA

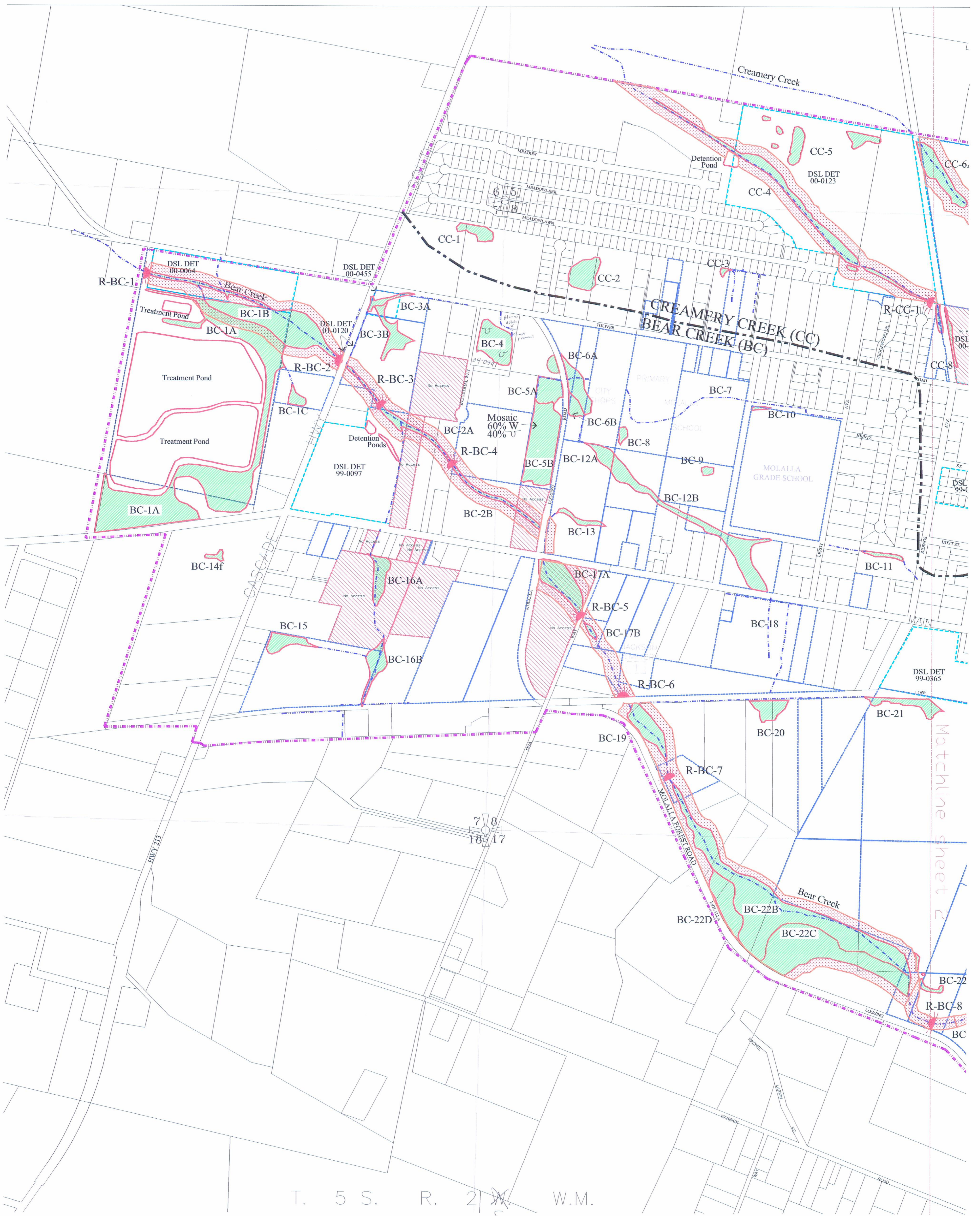
Local Wetlands Inventory

Pacific Habitat Services, Inc.
9450 SW Commerce Circle, Suite 180
Wilsonville, Oregon 97070
Phone: (503) 570-0800



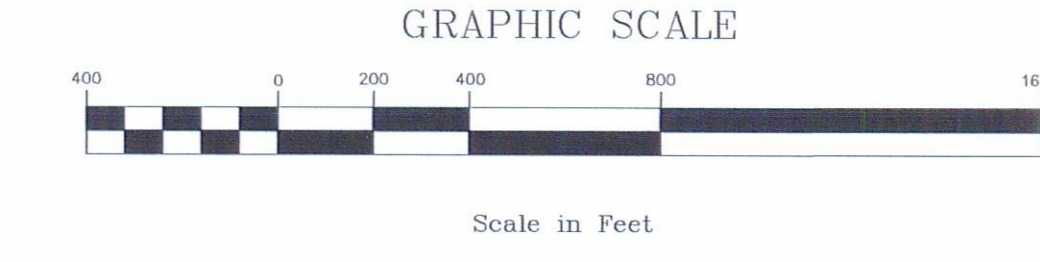
Reference

Sheet:



LEGEND

Project Boundary	Division of State Lands Determination
Watershed Boundary	Potentially Jurisdictional Wetland
Creeks/drainages	Riparian Area
Riparian Observation Point	Access Allowed
Riparian Code	Access Denied
	Wetland Code



Funding for this project was provided by a grant from the Oregon Department of Land Conservation and Development

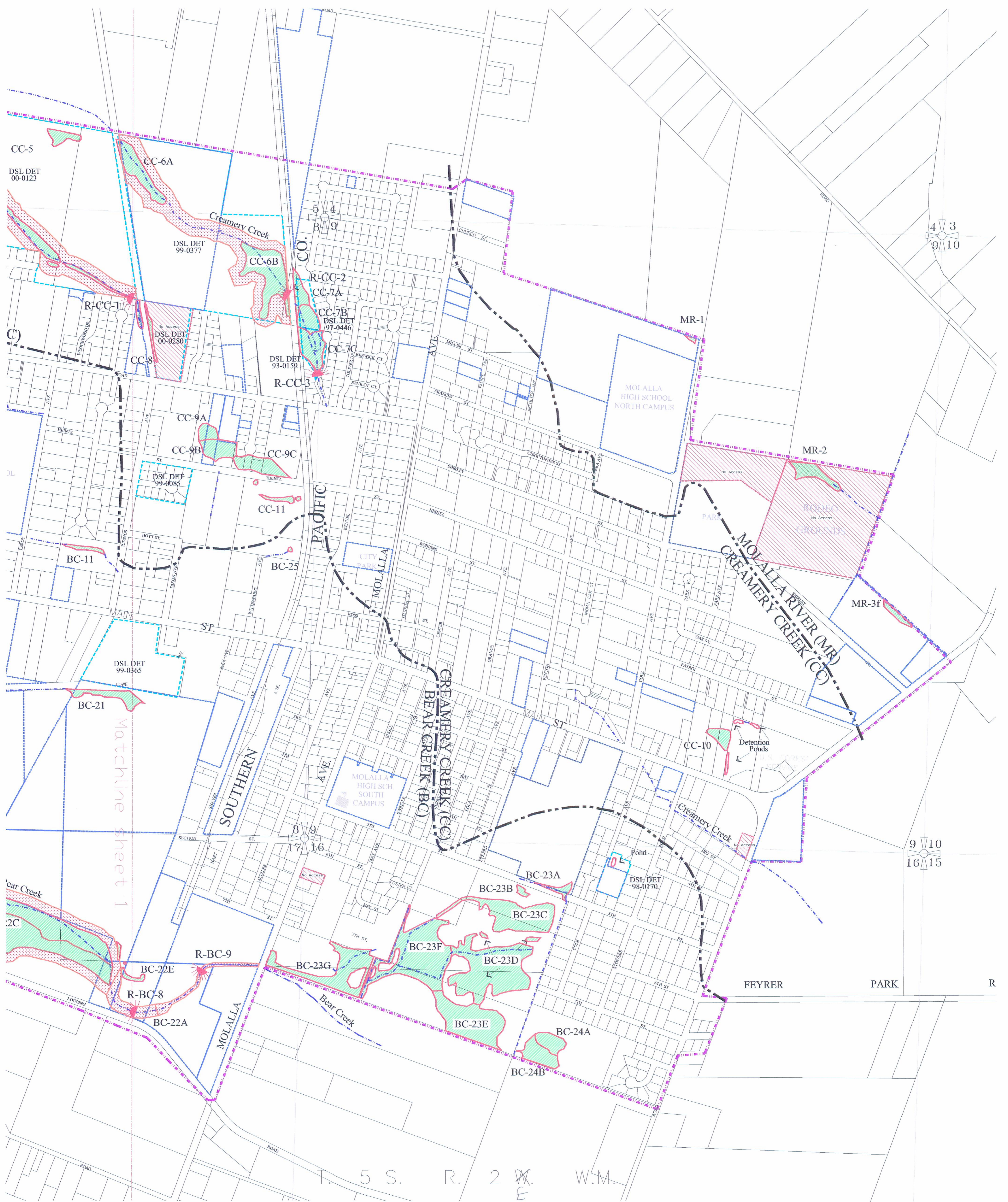
THIS MAP IS FOR PLANNING PURPOSES ONLY
 WETLAND BOUNDARIES ARE APPROXIMATE
 AND SUBJECT TO CHANGE

Information shown on this map is for planning purposes only and wetland information is subject to change. There may be unmapped wetlands subject to regulation and all wetland boundary mapping is approximate. In all cases, actual field conditions determine wetland boundaries. You are advised to contact the Division of State Lands and the U.S. Army Corps of Engineers with any regulatory questions.

DATE: June, 2001
 BASE MAP INFO: Supplied by City of Molalla, Clackamas County ISGIS
 JOB NO.: 2250

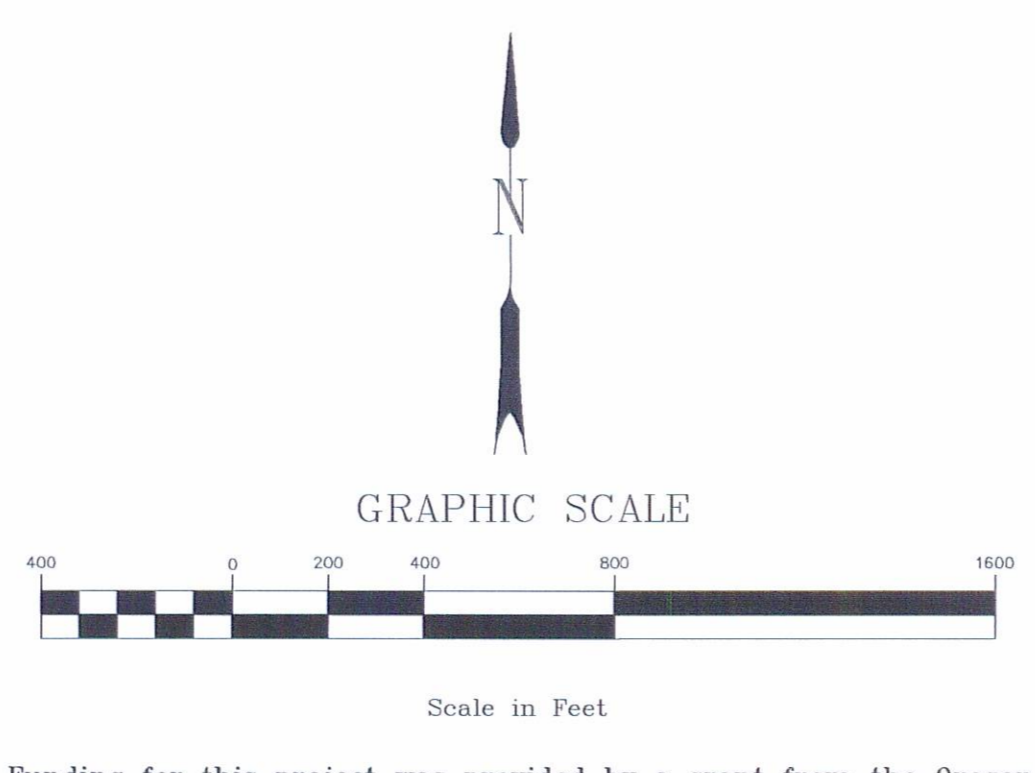
MOLALLA Riparian Inventory

Pacific Habitat Services, Inc.
 9450 SW Commerce Circle, Suite 180
 Wilsonville, Oregon 97070
 Phone: (503) 570-0800



Matchline sheet 1

LEGEND	
Project Boundary	Division of State Lands Determination
Watershed Boundary	Potentially Jurisdictional Wetland
Creeks/drainages	Riparian Area
Riparian Observation Point	Access Allowed
Riparian Code	Access Denied
	Wetland Code



Funding for this project was provided by a grant from the Oregon Department of Land Conservation and Development

THIS MAP IS FOR PLANNING PURPOSES ONLY
 WETLAND BOUNDARIES ARE APPROXIMATE
 AND SUBJECT TO CHANGE
 Information shown on this map is for planning purposes only and wetland information is subject to change. There may be unmapped wetlands subject to regulation and all wetland boundary mapping is approximate. In all cases, actual field conditions determine wetland boundaries. You are advised to contact the Division of State Lands and the U.S. Army Corps of Engineers with any regulatory questions.

DATE: June, 2001
 BASE MAP INFO: Supplied by City of Molalla,
 Clackamas County ISGIS
 JOB NO.: 2250

MOLALLA Riparian Inventory

Pacific Habitat Services, Inc.
 9450 SW Commerce Circle, Suite 180
 Wilsonville, Oregon 97070
 Phone: (503) 570-0800

Sheet: 2
 of: 2