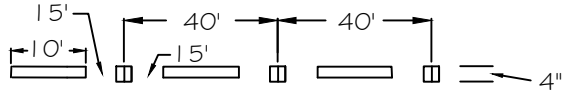
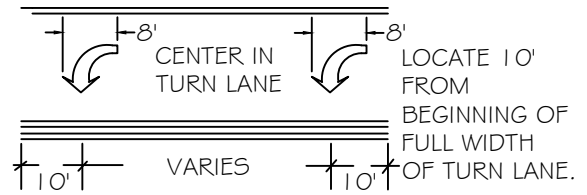


A



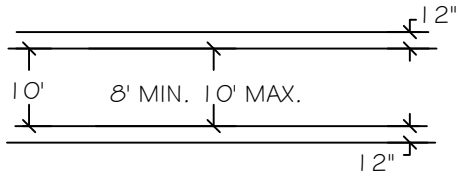
SKIP CENTERLINE: 4" YELLOW LINE WITH TYPE I BI- DIRECTIONAL YELLOW RAISED PAVEMENT MARKERS AT 40' O.C.

B



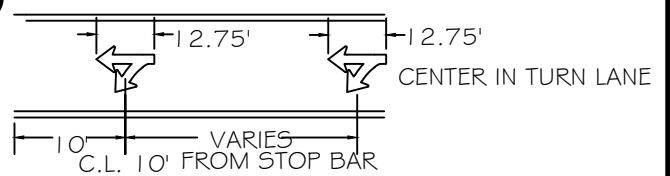
TURN LANE MARKINGS: SEE MUTCD AND DETAIL F. CENTERLINE SEE DETAIL J ON DRAWING R-1270. ARROWS SHALL BE PREFORMED THERMOPLASTIC PAVEMENT MARKING MATERIAL.

C



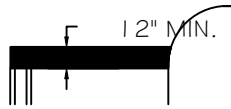
CROSSWALK: DISCONTINUED STANDARD. ALL NEW CONSTRUCTION SEE DETAIL V.

D



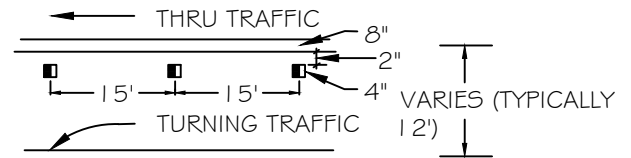
THRU AND TURN LANE MARKINGS SEE MUTCD FOR DETAILS. TURN AND THRU ARROWS SHALL BE PREFORMED THERMOPLASTIC PAVEMENT MARKING MATERIAL

E



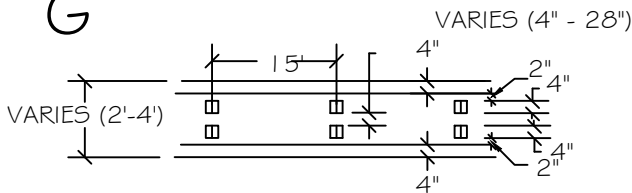
STOP BAR: SHALL BE THERMOPLASTIC PAVEMENT MARKING MATERIAL. NOT REQUIRED AT INTERSECTIONS IF MARKED CROSSWALKS ARE INSTALLED.

F



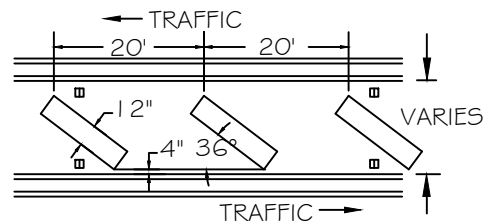
TURN LANE: 8" WHITE LINE WITH MONO-DIRECTIONAL CRYSTAL TYPE I MARKERS (WHITE) AT 15' O.C.

G



MEDIAN NOSE: TWO 4" YELLOW LINES WITH BI-DIRECTIONAL YELLOW TYPE I MARKERS AT 15' O.C. FOR USE AT INTERSECTIONS WHERE MEDIAN NOSE IS LESS THAN 4' WIDE.

H



DIAGONAL LINES: 12" YELLOW OR WHITE LINES INSTALLED AS SHOWN.

Detail Drawing may not be altered or changed in any manner except by the Public Works Director. It is the responsibility of the user to acquire the most current version.

CITY OF MOLALLA
DEPARTMENT OF PUBLIC WORKS



PAVEMENT MARKINGS - PG. 1

DRAWN BY	GF	07/2021
CHECKED BY	GF	07/2021

R-1265