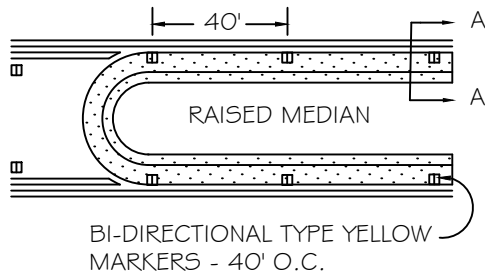
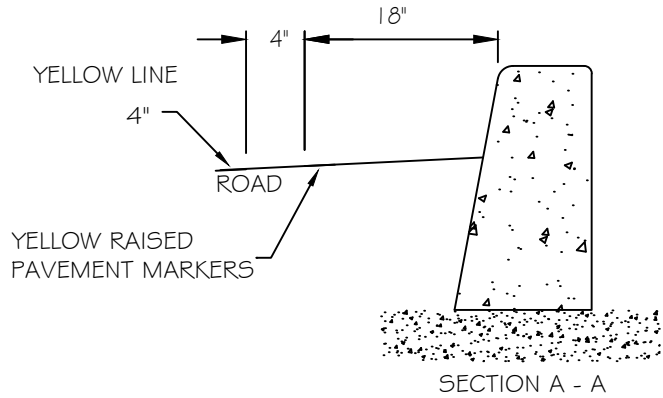


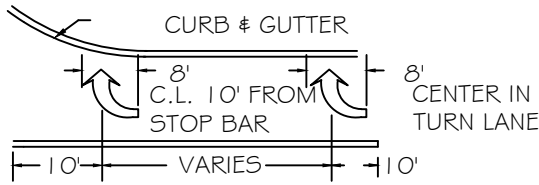
Q



RAISED MEDIAN STRIPE: 4" YELLOW LINE WITH TYPE I BI-DIRECTIONAL YELLOW RAISED PAVEMENT MARKERS AT 40' O.C.

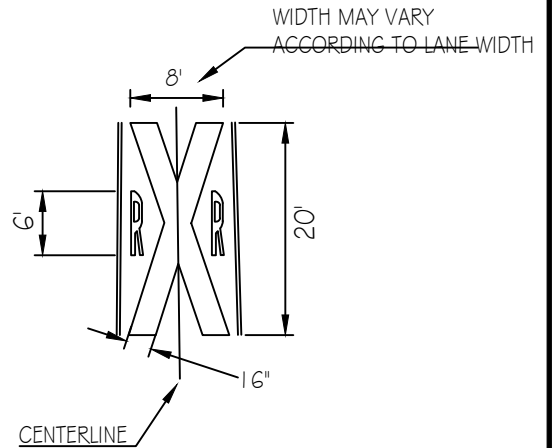


R

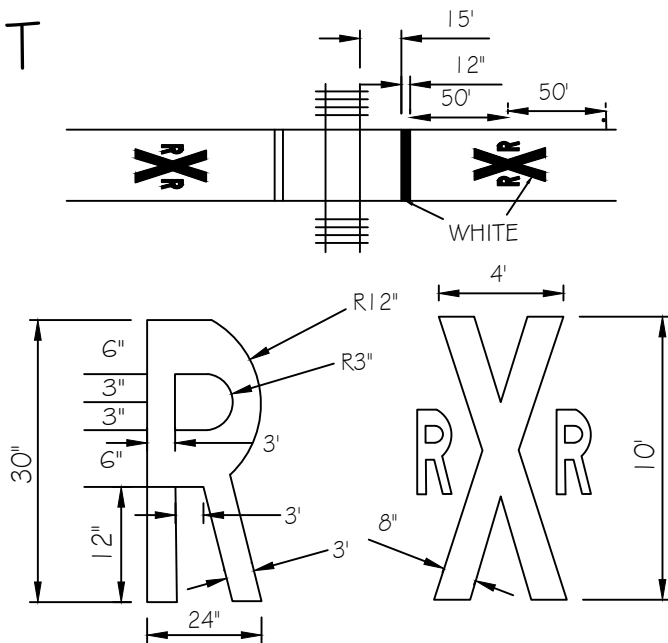


RIGHT TURN LANE MARKINGS: SEE MUTCD AND ODOT STANDARD DRAWING TM530 FOR DETAILS. ARROWS SHALL BE THERMOPLASTIC PAVEMENT MARKING MATERIAL.

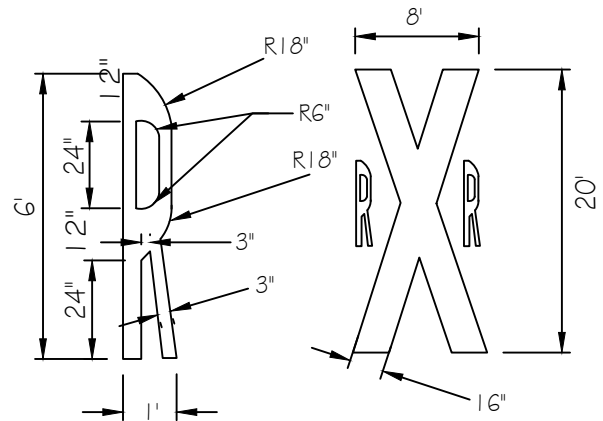
S



T



PAVEMENT WORD AND SYMBOL MARKINGS FOR BIKE ROUTE AT R/R GRADE X-ING



PAVEMENT MARKINGS FOR R/R CROSSING

Detail Drawing may not be altered or changed in any manner except by the Public Works Director. It is the responsibility of the user to acquire the most current version.

CITY OF MOLALLA
DEPARTMENT OF PUBLIC WORKS



PAVEMENT MARKINGS - PG. 3

DRAWN BY	GF	01/2019
CHECKED BY	GF	01/2019

R-1275