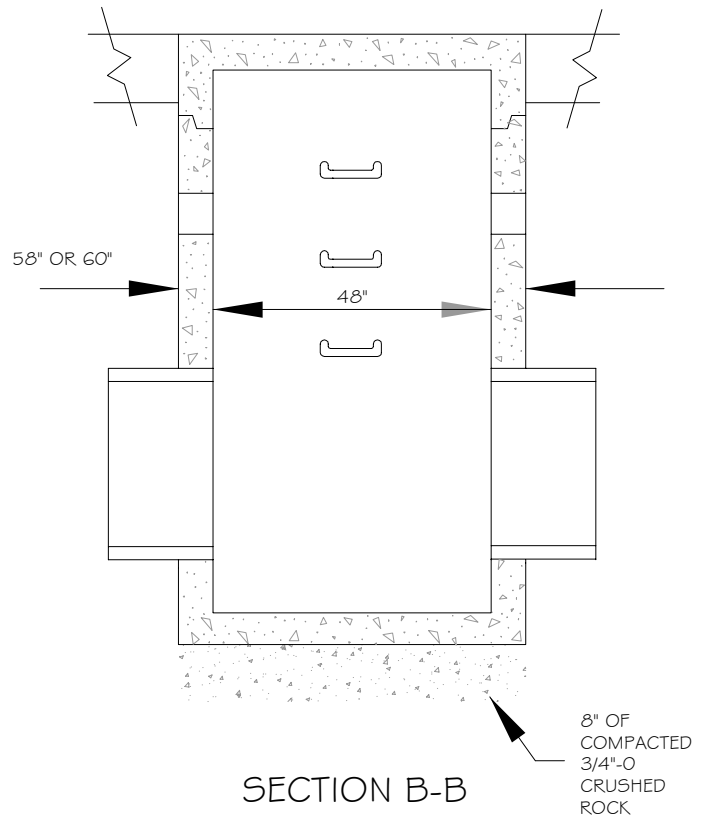
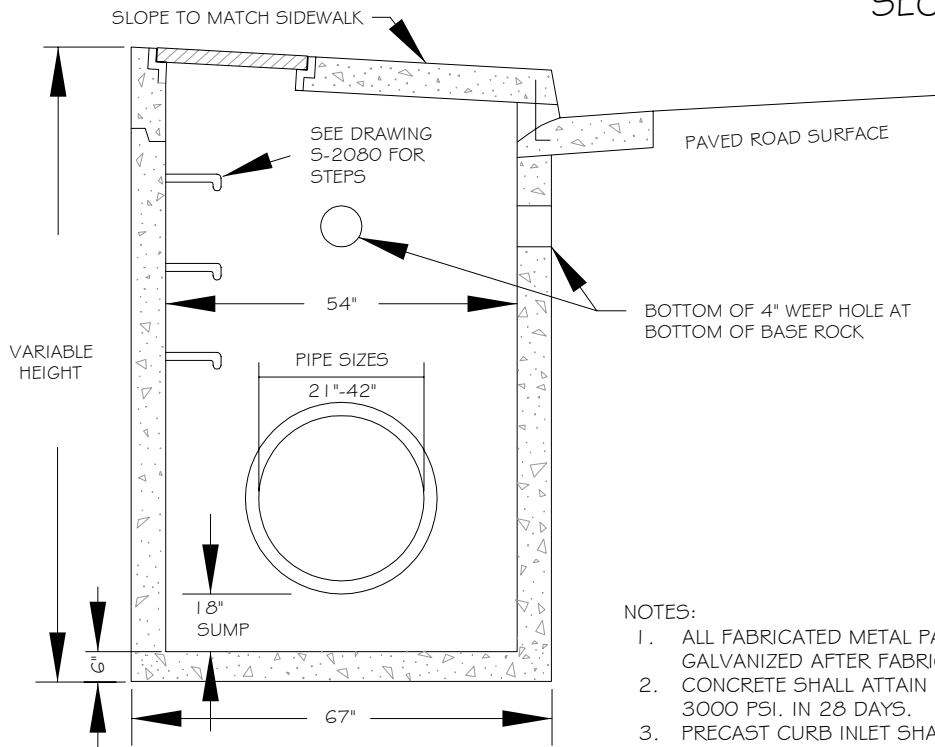


PLAN VIEW



SECTION B-B



SECTION A-A

NOTES:

1. ALL FABRICATED METAL PARTS SHALL BE HOT-DIPPED GALVANIZED AFTER FABRICATION.
2. CONCRETE SHALL ATTAIN A MIN. COMPRESSIVE STRENGTH OF 3000 PSI. IN 28 DAYS.
3. PRECAST CURB INLET SHALL BE UTILITY VAULT 48" CURB INLET TOP #CI-48MH-23FC OR APPROVED EQUAL.
4. NON-SUMP CATCH BASIN SHALL BE CHanneled

Detail Drawing may not be altered or changed in any manner except by the Public Works Director. It is the responsibility of the user to acquire the most current version.

CITY OF MOLALLA  
DEPARTMENT OF PUBLIC WORKS



48" CURB INLET  
(CI-48)

DRAWN BY PDG 03/2017

CHECKED BY GF 03/2017

S-2090