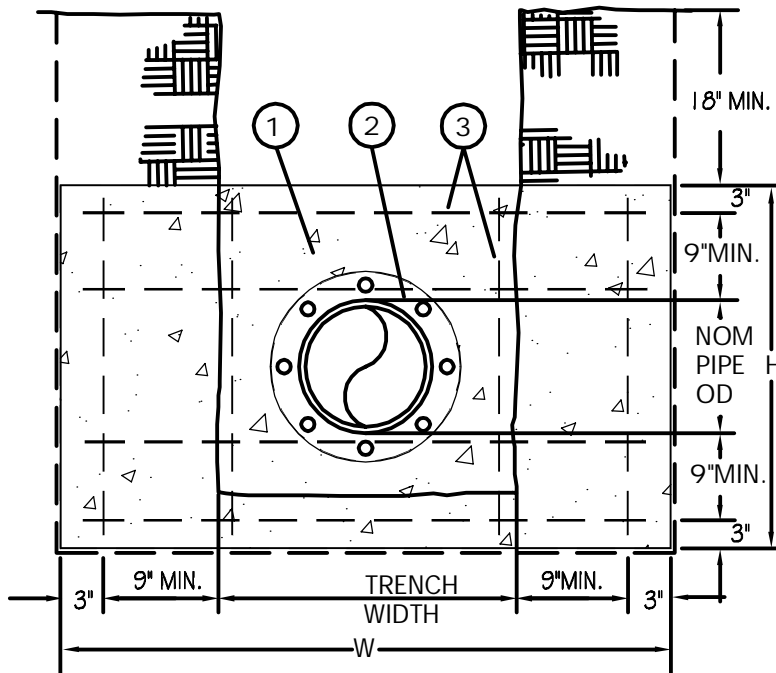


TOP VIEW



FRONT VIEW

MATERIALS:

- ① CONCRETE STRADDLE BLOCK.
- ② MEGA LUG OR APPROVED EQUAL
- ③ #4 REBAR EACH WAY, 12" O/C.

STRADDLE BLOCK	
PIPE SIZE (IN.)	BEARING AREA (S.F.)
4	2.1
6	4.9
8	8.7
10	13.6
12	19.6
18	44

NOTES:

1. STRADDLE BLOCKS FOR PIPE LARGER THAN 18" SHALL BE DESIGNED INDIVIDUALLY BY THE ENGINEER AND SHALL BE BASED ON THE FOLLOWING:
 - A.) 200 PSI. WATER PRESSURE
 - B.) SOIL BEARING CAPACITY, STEEL SIZE AND SPACING BY THE ENGINEER.
2. BEARING AREA OF BLOCK SHALL BE AGAINST UNDISTURBED SOIL.
3. STRADDLE BLOCK SHALL HAVE A MINIMUM OF 18" COVER.
4. CONCRETE SHALL BE COMMERCIAL MIX, MIN. COMPRESSIVE STRENGTH OF 3000 PSI AT 28 DAYS.
5. STRADDLE BLOCK HEIGHT (H) & WIDTH (W) SHALL BE DESIGNED AND STAMPED BY THE ENGINEER.

Detail Drawing may not be altered or changed in any manner except by the Public Works Director. It is the responsibility of the user to acquire the most current version.

CITY OF MOLALLA DEPARTMENT OF PUBLIC WORKS



STRADDLE BLOCK DETAIL DEAD ENDS AND BLOW-OFFS

DRAWN BY	PDG	01/2016
CHECKED BY	JC	01/2016

W-3010